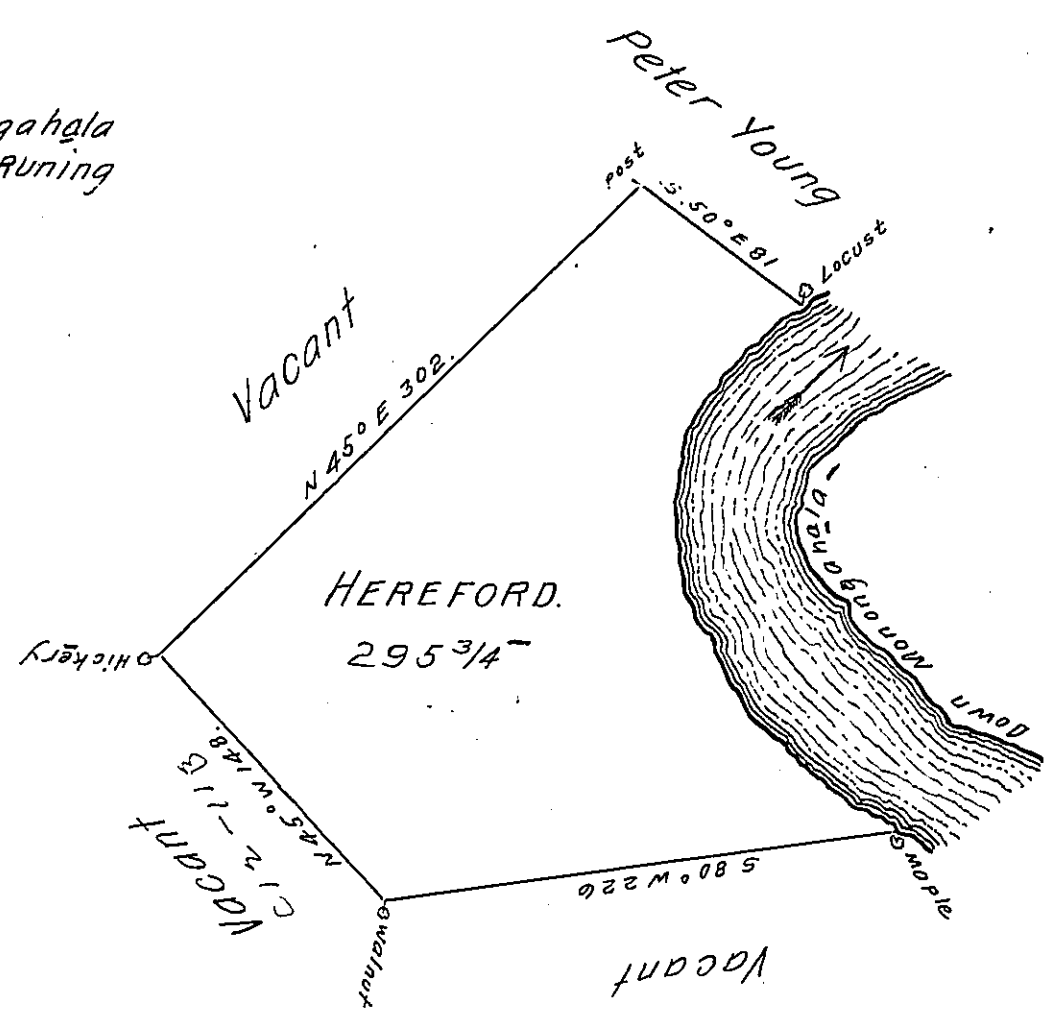


Courses up Monongahala
 Beg. at a Locust & Running
 S. 45° W 52 f
 S. 26 W 22 f
 S. 5 W 42 f
 S. 15 E 30 f
 S. 30 E 20 f
 S. 35 E 42 f
 S. 52 E 78 f
 to a Maple
 286-



In pursuance of an order No 3763 dated 26th August 1769 the above is a draught of a tract of land call'd Hereford situated on the West side Monongahala- containing 295. ³/₄ ~~acres~~ acres with the usual allowance of 6 f c. for Roads, highways &c. Survey'd 7th October 1769 for Samuel M^cColloch (son of George)

by
 John Lukens Esq^r Surveyor General. James Hendricks -

IN TESTIMONY that the above is a copy of the original remaining on file in the Department of Internal Affairs of Pennsylvania, made conformably to an Act of Assembly approved the 16th day of February, 1833, I have hereunto set my Hand and caused the Seal of said Department to be affixed at Harrisburg, this eleventh day of October 1910.

Henry Houck
 Secretary of Internal Affairs.